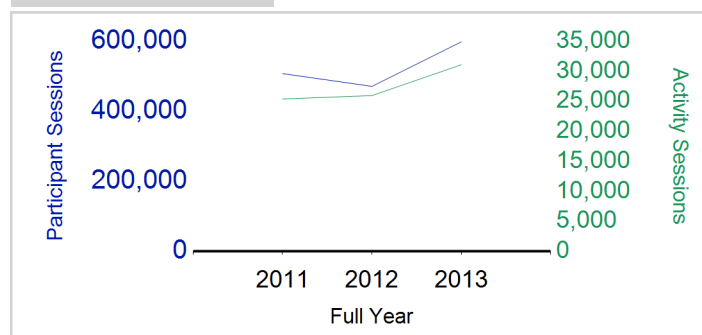


# Term Report: Glasgow City Council

Academic Year : 2013/2014, Term(s) : Full Year

Putting Sport First

**sportscotland**  
 the national agency for sport
Participant Sessions<sup>1</sup>

	2011 Full Year	2012 Full Year	2013 Full Year
<b>Activity Sessions</b>	<b>25,421</b>	<b>25,982</b>	<b>31,125</b>
% Purely voluntary	34%	40%	38%
Activity Session Blocks <sup>2</sup>	2,917	3,078	3,827
Avg Activity Sessions / Blocks <sup>3</sup>	8.7	8.4	8.1
Different Activities	65	63	67
<b>Participant Sessions<sup>1</sup></b>	<b>508,248</b>	<b>471,742</b>	<b>599,061</b>
% Female	42%	41%	45%
<b>Distinct Deliverers<sup>4</sup></b>	<b>1,218</b>	<b>1,296</b>	<b>1,475</b>
% Volunteers	47%	50%	53%
Qualified Volunteers	325	365	523
Secondary Pupils	78	68	88
Total Deliverer Sessions <sup>5</sup>	37,222	38,701	43,731
Avg Deliverers Sessions / Deliverer	30.6	29.9	29.6
<b>School Club Links</b>	<b>894</b>	<b>1,139</b>	<b>1,219</b>
Schools with at least 1 link	185	183	191
Clubs with at least 1 link	178	172	191

1. Participant Sessions are the 'visits' pupils have made to activities. These figures do not represent the distinct pupils, and should only be taken as indicative of participation

2. Activities are recorded in ASMO as 'Activity Session Blocks' which describe a group who meet to take part in an activity.

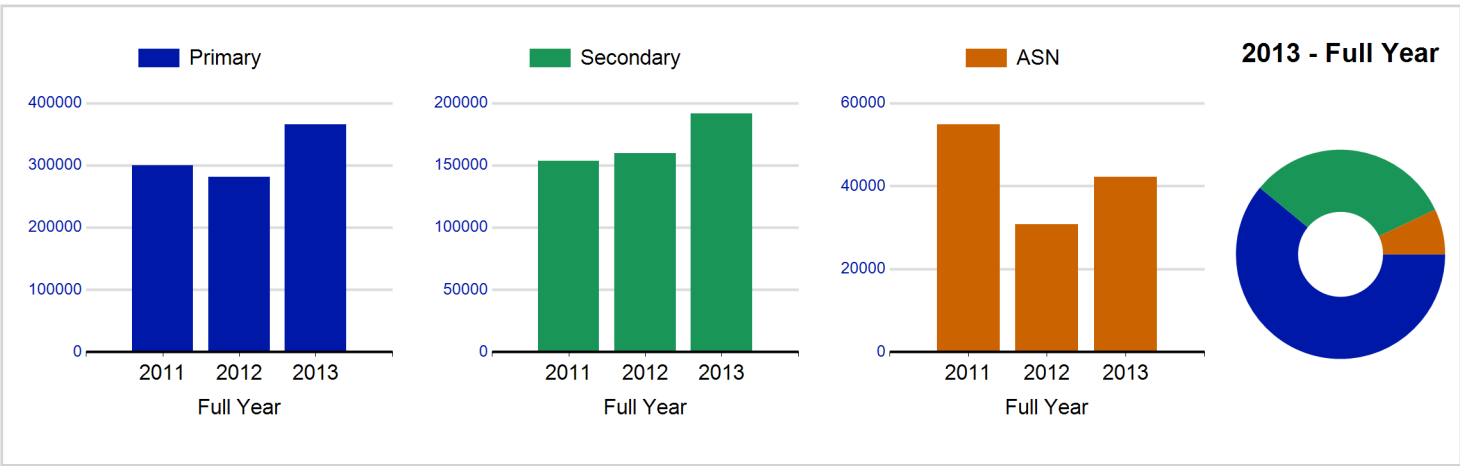
3. The Average Activity Sessions/Block figure shows the average length of a block (i.e. how many weeks did the average block run for?)

4. Distinct Deliverers are deliverers who have delivered at least one session of Active Schools supported activity across the selected year/term.

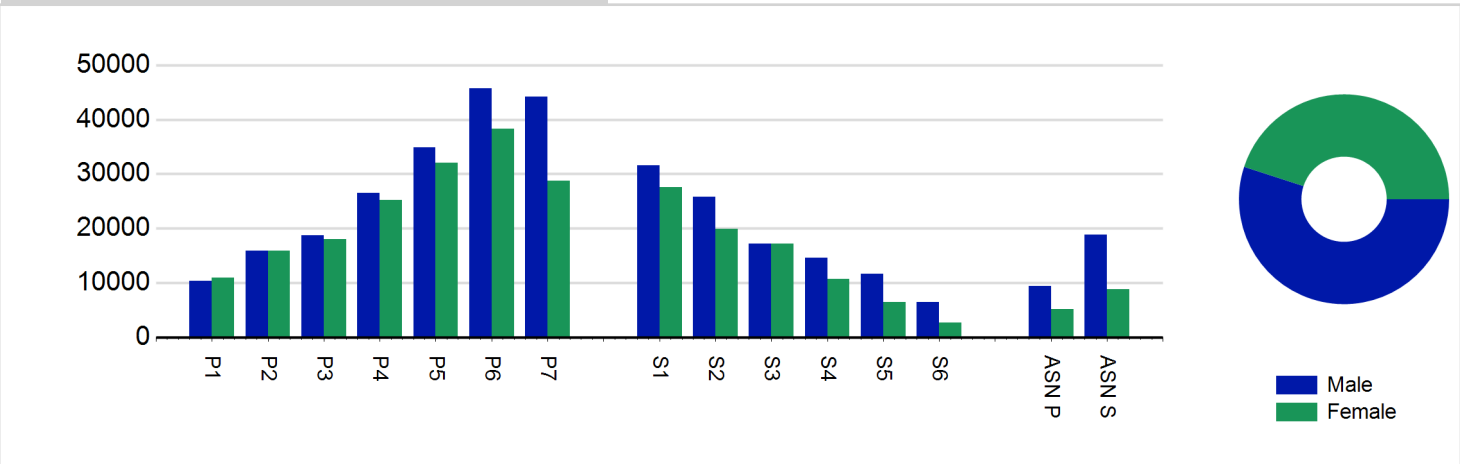
5. Deliverer Sessions are the 'visits' deliverers have made to activities. These figures do not represent the distinct deliverers, and should only be taken as indicative of delivery. Distinct deliverer information is only available at the local authority level.

6. Figures with N/A are not available for the 2008-11 phase of Active Schools. Charts which refer to information pre 2011 will show a huge increase from 0 – this is because we cannot include any 2008-2011 data at this level.

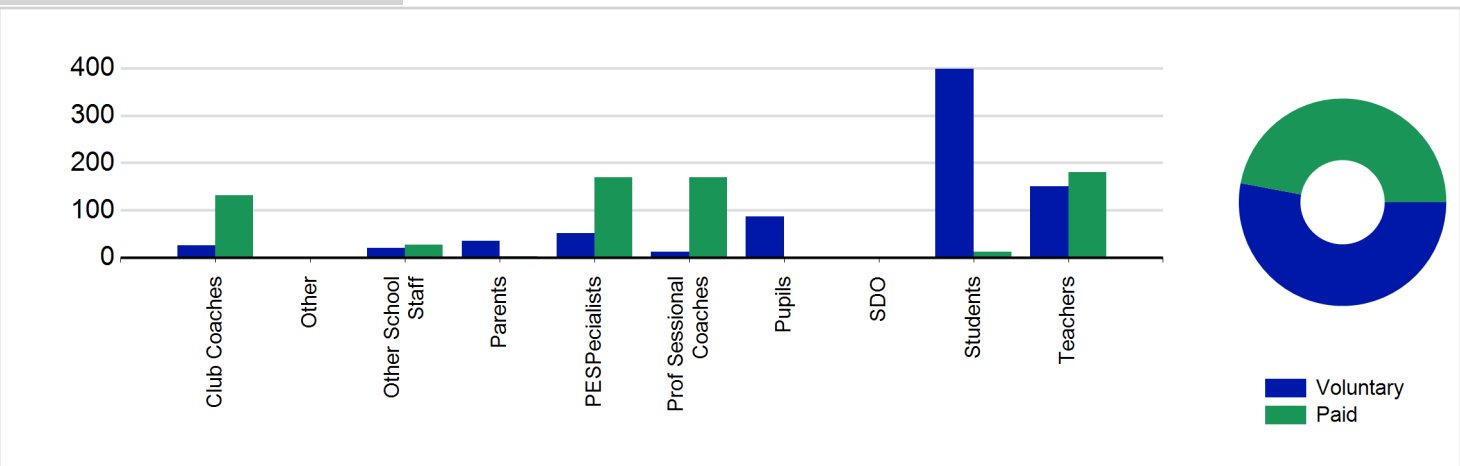
### Participant Sessions<sup>1</sup> by School Type



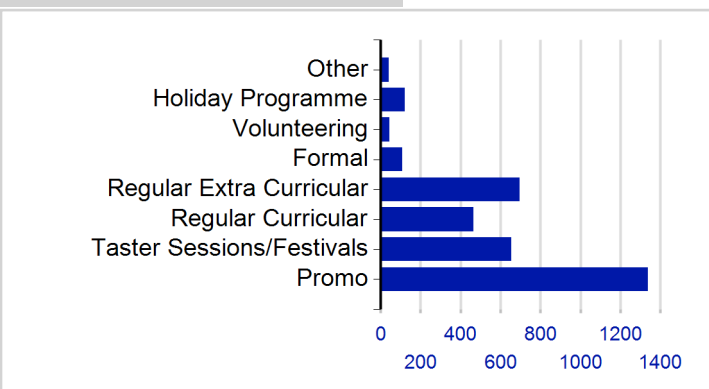
### Participant Sessions<sup>1</sup> by Year Group and Gender



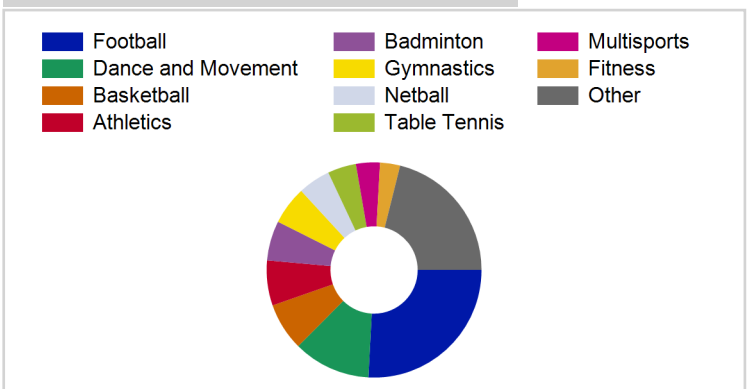
### Distinct Deliverers<sup>4</sup>



### School/Club Links



### Top 10 Activities by Participant Sessions<sup>1</sup>



# Term Report: Glasgow City Council

Academic Year : 2013/2014, Term(s) : Full Year

Putting Sport First

**sportscotland**  
the national agency for sport

## Participant Sessions 7 by Yeargroup and Gender

	Male	Female
<b>P1</b>	10,390	10,968
<b>P2</b>	15,917	15,901
<b>P3</b>	18,721	18,018
<b>P4</b>	26,496	25,146
<b>P5</b>	34,869	32,089
<b>P6</b>	45,701	38,248
<b>P7</b>	44,135	28,711
<b>S1</b>	31,567	27,593
<b>S2</b>	25,821	19,853
<b>S3</b>	17,222	17,194
<b>S4</b>	14,596	10,720
<b>S5</b>	11,584	6,444
<b>S6</b>	6,395	2,645
<b>ASN P</b>	9,390	5,135
<b>ASN S</b>	18,818	8,774
<b>Total</b>	<b>331,622</b>	<b>267,439</b>

## Distinct Deliverers 4 by Type

	Paid	Voluntary
<b>Parents</b>	3	35
<b>Teachers</b>	181	150
<b>PESpecialists</b>	169	52
<b>Other School Staff</b>	27	21
<b>Club Coaches</b>	131	26
<b>Prof Sessional Coaches</b>	169	12
<b>Students</b>	13	398
<b>Pupils</b>	1	87
<b>SDO</b>	0	0
<b>Other</b>	0	0
<b>Total</b>	<b>694</b>	<b>781</b>